

arbonaut

Development of an innovative data visualisation/sharing platform on forest cover loss in Uganda and development of SDSS for forest department in Bhutan

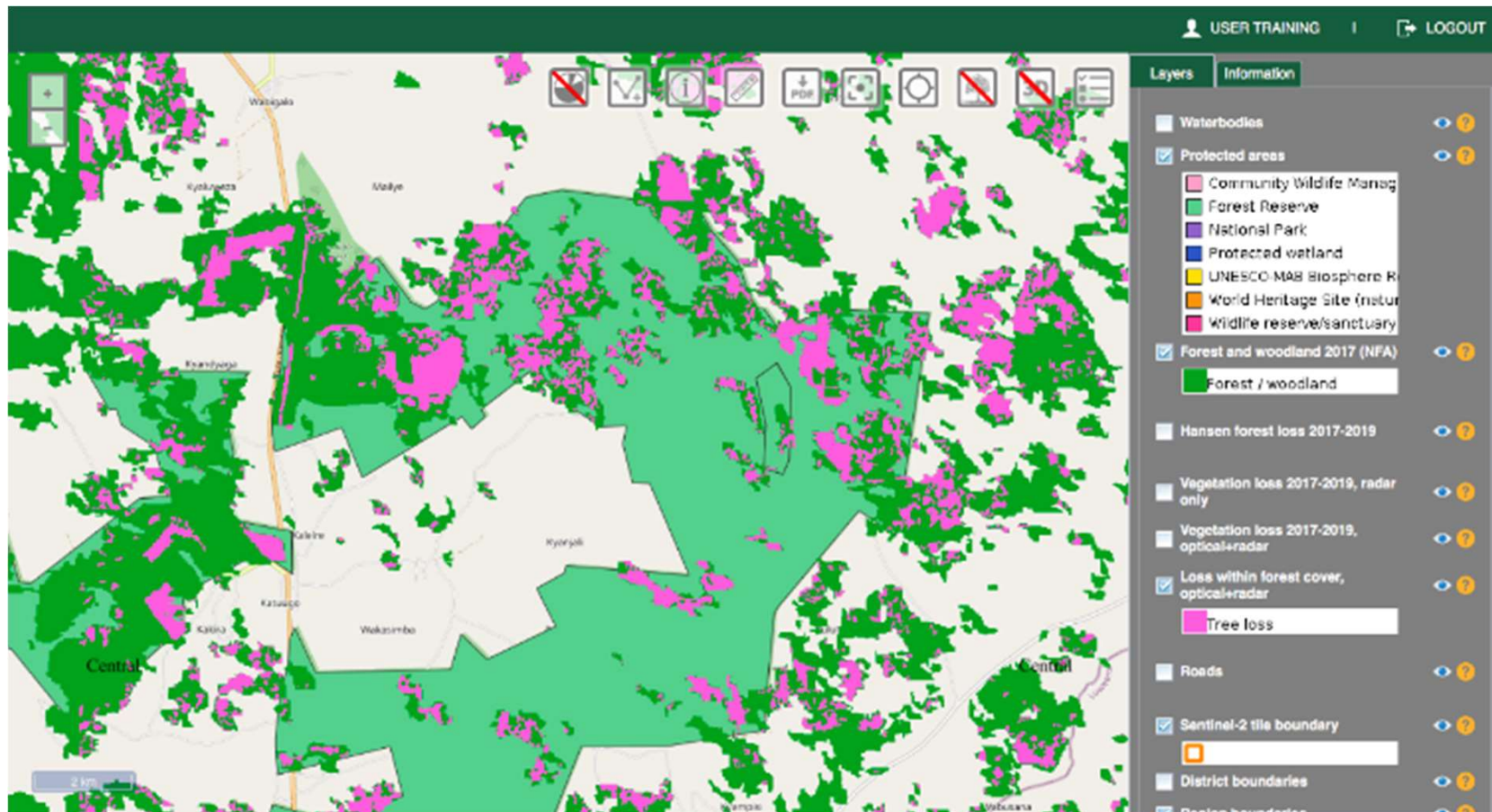


ProMS Platform Highlights (Uganda example)

- **The piloted visualisation platform allows assessing rate of forest loss and its causes**
- **Recent spatial data** including multispectral satellite images (Sentinel-2), Forest and woodland, Protected areas, Forest loss, Population density, Roads, Waterbodies, District, Region and Country boundaries are currently displayed on the platform
- **Forest loss data** can be updated through cloud-computing with regular intervals
- **Mobile application** allows offline map navigation to the verification sites and recording field notes, photos and attaching documents in field
- **Web interface** supports allocating field sample plots and sharing their locations by e-mail, generating maps, monitoring field data collection progress and verifying the field collected information with background satellite imagery, among other things

Data integration on the platform (web & mobile interface)

- Configuration of the compiled background reference maps on the platform via WMS service (GeoServer, PostGIS database)
- Upload and configuration of the created forest cover loss map



SDSS Highlights (Bhutan example)

- Collect and store the key DoFPS data sets related to Forestry Clearance process in a centralized database
- Share data within the DoFPS for different levels through Portal
- Support DoFPS in issuance of Forestry Clearance
 - GIS based system to facilitate informed, unbiased and expeditious decisions on Forestry Clearance
 - Provide rapid appraisal of project proposal and deliver result of analysis in a few minutes
 - Access to the system to all Functional divisions, Territorial divisions and Protected Areas

