



Landslides Risk - Be Vigilant!!

Can we identify
landslides risk?

Yes, we can ...
for that we need to be
vigilant and **Evacuate**
from the area and
Inform Authority.

If you are living in **Hilly Area**,
you must be careful when you see
the **symptoms.**



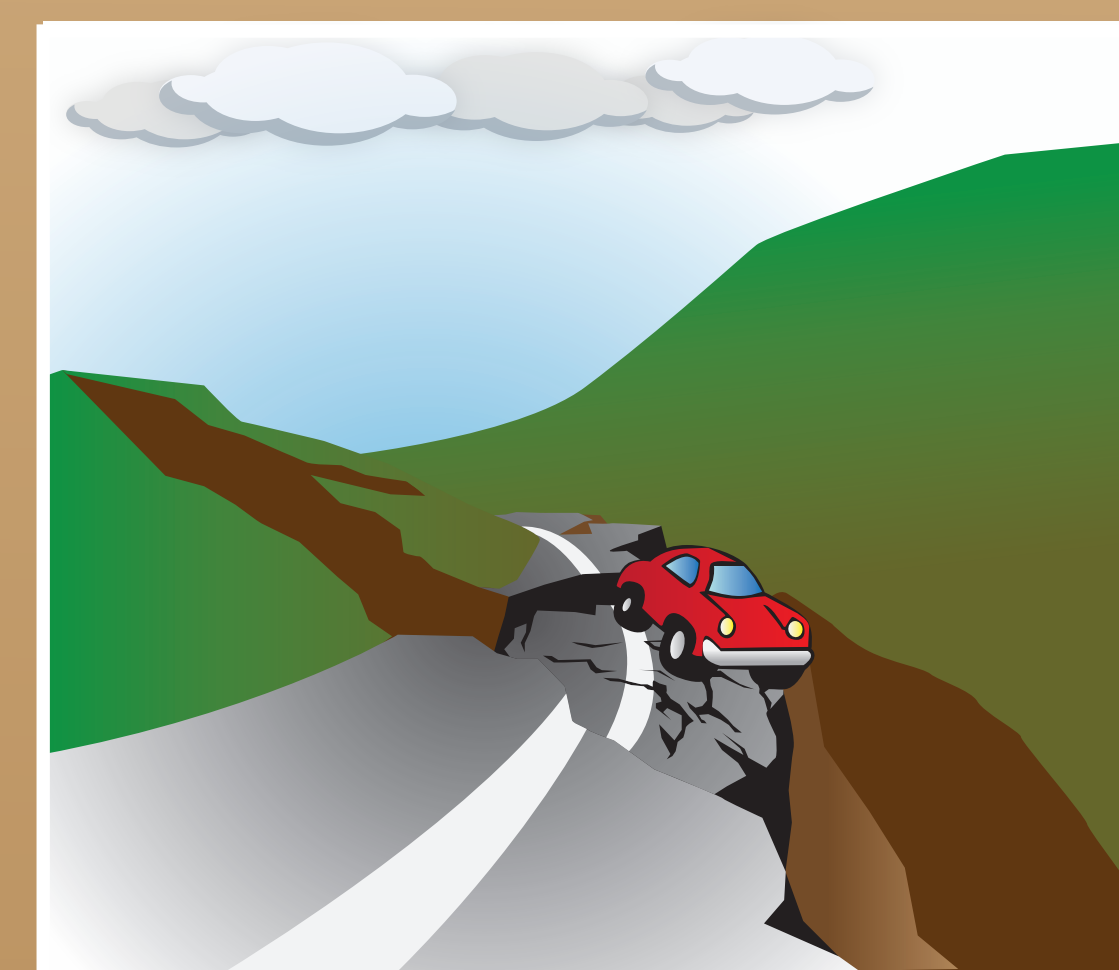
Sudden appearance of cracks
on the slope or surface.



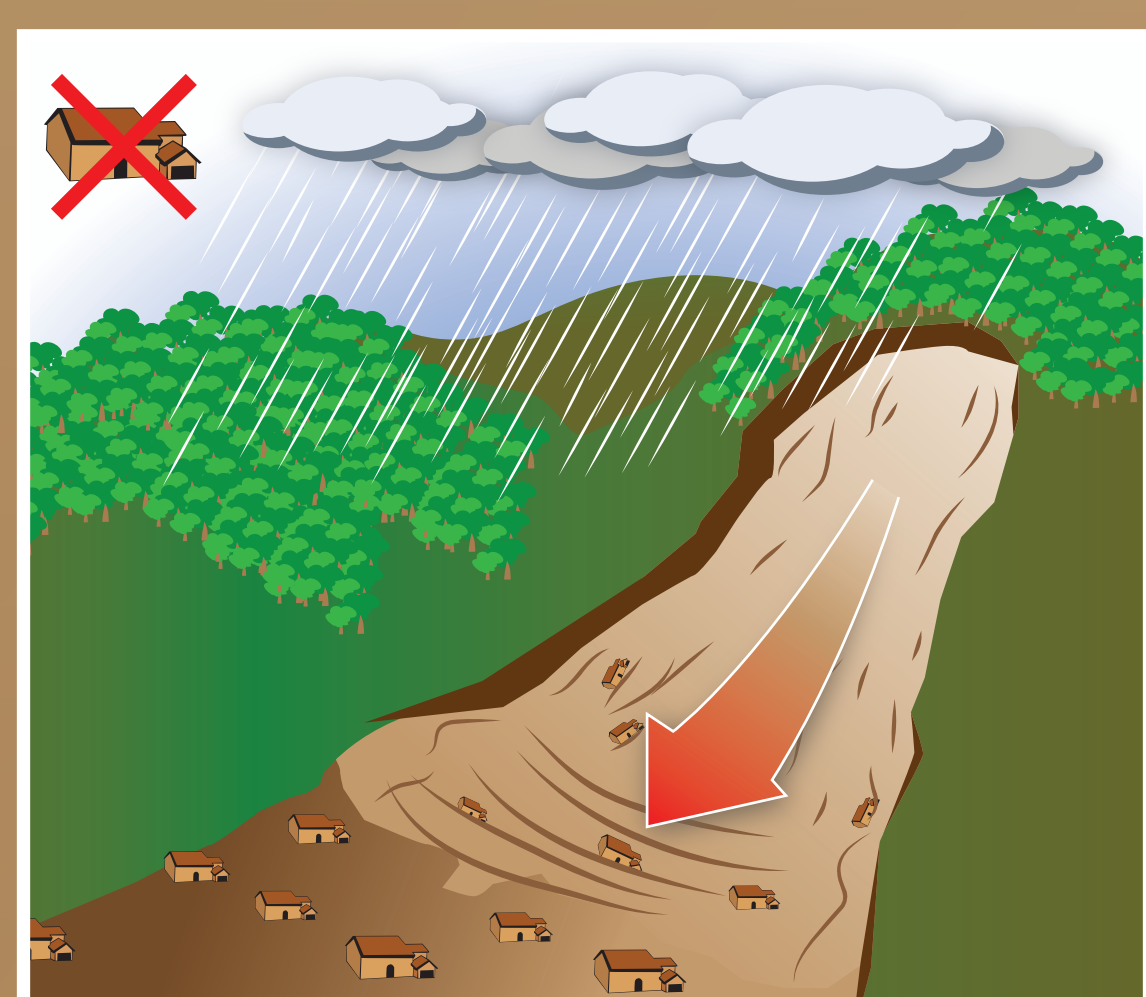
Tilting of trees and towers.



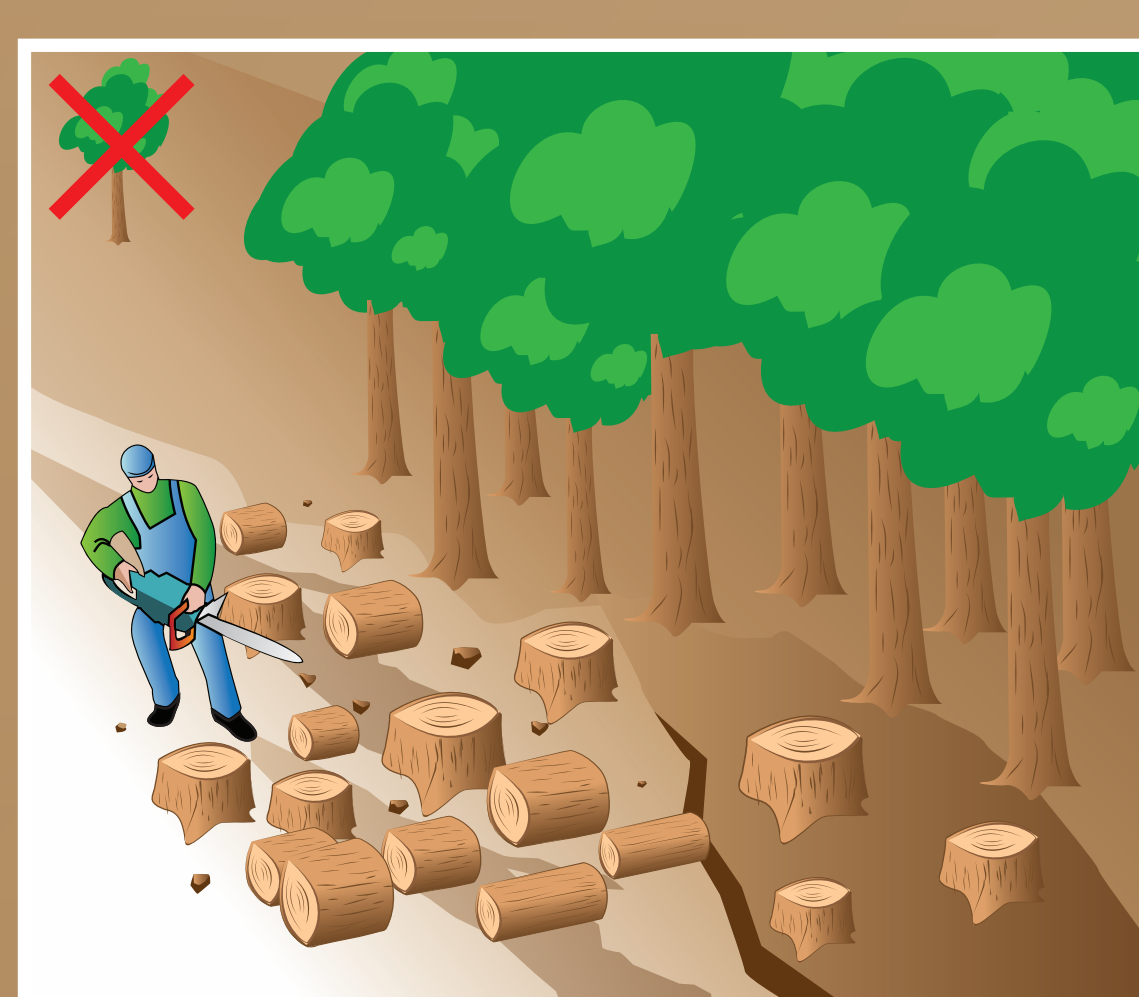
Sudden oozing of water on
the slope.



Subsidence of roads.



Do not construct house on
previous landslide area.



Avoid cutting trees and
removing vegetation.



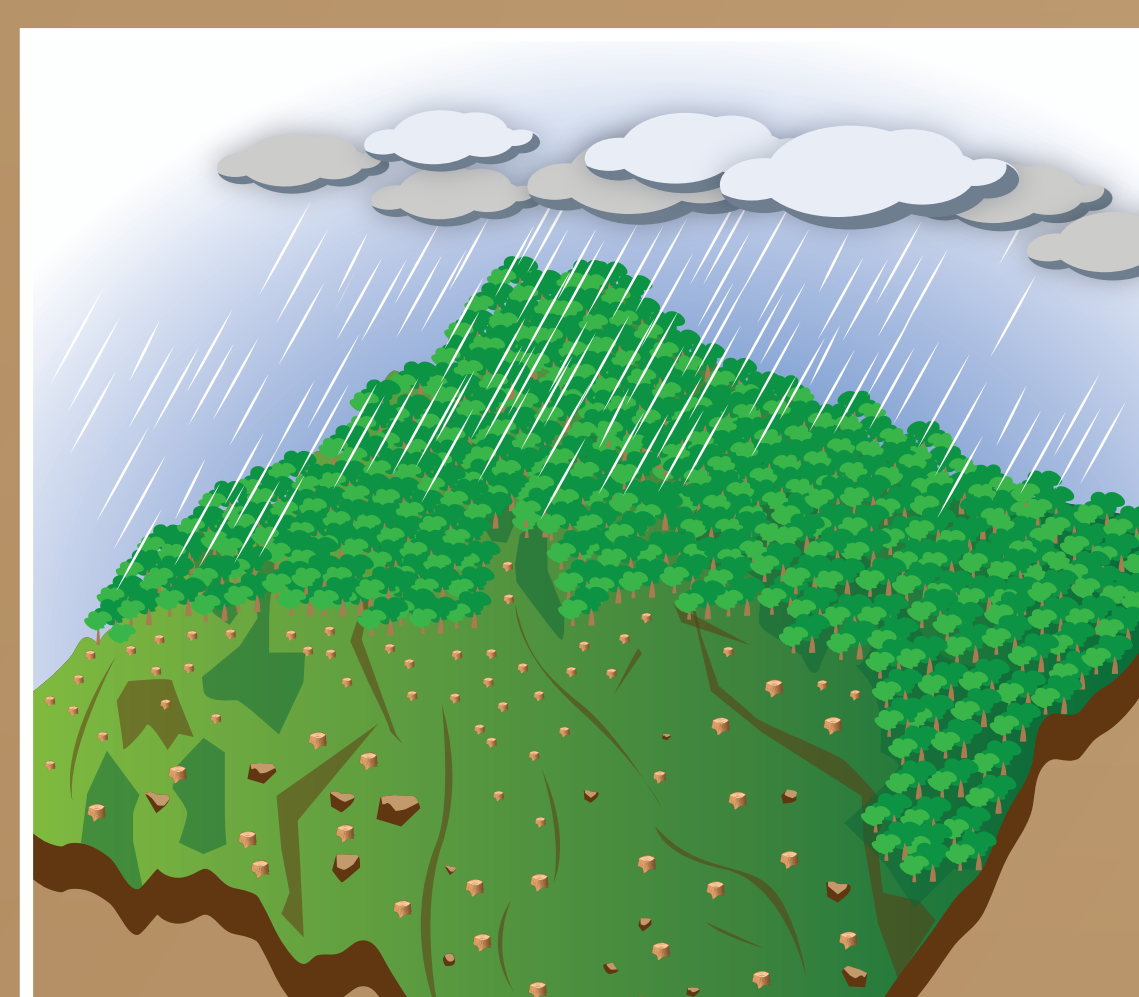
Prevent water entering into
landslides area.



Avoid construction on un-
stable slope.



Poor maintenance of drainage
may lead to landslides.



Continuous rain may lead to
landslides.

Landslides have
Potential Risk in our
lives and can be saved
if we are aware and
be **VIGILANT**

POUROSHAWA DISASTER MANAGEMENT COMMITTEE
Cox's Bazar, BANGLADESH