

Early Birds Discount

Participants making payment for attendance to the DMH full course before 31 March 2005 will receive a special early bird discount of 10% on the course fees.

Group Discount

ADPC has established an agreement, which recognizes the special needs of sponsoring organizations that wish to send large groups to the course. This operates when one single organization decides to send a group of five persons to the course, in such a case the course fee will be waived for a sixth participant from that organization.

Payment

The fee should be paid in advance by bank transfer to ADPC account or deposited at the time of course registration in cash or cheque. Kindly confirm your mode of payment in the application form.

A deposit of 15% is required from individual participants without a sponsoring organization who are planning to make payment at the time of registration. Cheques should be made payable to the **Asian Disaster Preparedness Center**.

Registration will be in the first morning of the course. Payment by bank transfer or deposit should be paid at least three weeks prior to the course.

Cancellation

If you are unable to attend, a substitute delegate is welcome to attend in your place. A full refund, less 15% administrative charge will be provided if attendance is cancelled.

Application

Interested persons can apply directly but preference is given to those nominated by their departments or employer organizations.

Application should be made on ADPC Application Form, which should be sent by fax or in an attached file through email or fax to the numbers given at the end of this brochure.

For applicants being sponsored by an organization, a letter of support from the organization is required. Further pre-course information will be provided once your nomination is accepted.

The form for on-line applications can be found on the ADPC website at:

<http://www.adpc.net/training/form.html>

Asian Disaster Preparedness Center

Established in 1986, ADPC is the lead regional resource center dedicated to disaster reduction in Asia and the Pacific.

ADPC works with governments, communities and NGO's of the Asia and Pacific region to strengthen their capacities in disaster preparedness, mitigation and response through professional training, technical assistance, regional program management, information and research.

Contact Address

The Manager
Training Resource Group
Asian Disaster Preparedness Center (ADPC)
Asian Institute of Technology,
P.O. Box 4 Klong Luang,
Pathumthani 12120, Thailand
Phone: (+662) 516 5900 to 10 ext 330 or 328
Fax: (+662) 524 5360 / 5245350
Email: tedadpc@adpc.net
Website: <http://www.adpc.net>



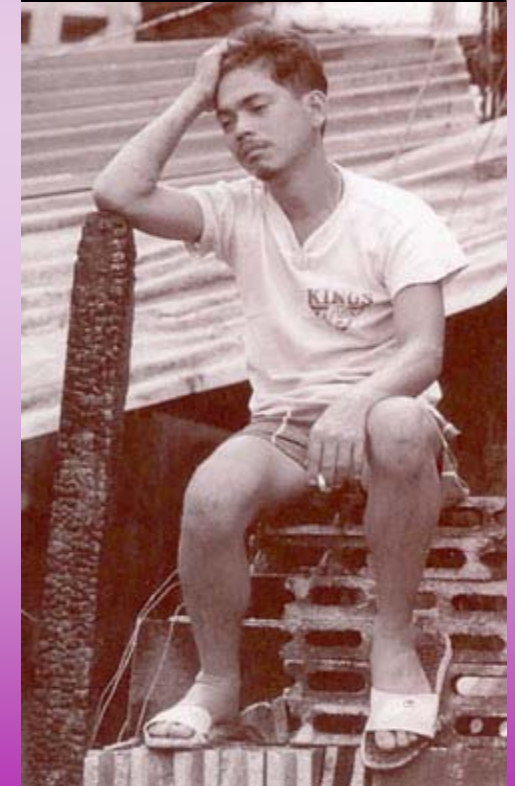
Asian Disaster Preparedness Center

Disaster Mental Health

Community Based
Psychological Support
CBPS-1

Psychological Support
Practitioners Workshop
CBPS-1A

23-27 May 2005, Bangkok, Thailand



The 1st Regional Training Course on Disaster Mental Health

Purpose of the Course

This course aims to provide mental health professionals the skills and understanding to begin to develop, implement, supervise, and manage psychological support programs in preparation for and in response to disaster

Community Based Psychological Support (CBPS-1)

The first 3 days (**23-25 May 2005**) will focus on the impact of stress in disasters and the components and assessment of psychological support. Practical models of implementation will be discussed.

Psychological Support Practitioners Workshop (CBPS-1A)

The following 2 days (**26-27 May 2005**) will focus on disaster mental health strategies and interventions, and the management of psychological support programs.

Learners may choose to attend the CBPS-1 course only. To complete the full Disaster Mental Health Course, learners must attend both CBPS-1 and CBPS-1A courses.

Objective of the Training

The learners will receive information that will enable them to:

- Understand the significance of the impact of stress on those affected by a disaster, including how stress reactions may interfere with general disaster relief programs
- Understand the components of psychological support in disaster
- Learn the strategies and interventions in disaster mental health
- Learn to manage, implement, and develop psychological support programs in disaster

Course Delivery Strategy

The course adopts a participative approach, with interactive instruction, numerous group exercises and activities. Learners will meet in work groups for related exercise activities. The training materials like workbooks, handouts and the visual aids used in the presentation of the course are of the highest quality. The materials used for the training course are presented in planned and organized units of instruction.

Course Contents

The course content includes:

- Impact of Traumatic Stress
- Components of psychological support in disaster
- Disaster Mental Health
- Community-based psychological first aid
- Assessment in psychological support
- Disaster mental health strategies and interventions
- Management and implementation of psychological support programs in disaster

Target Audience

Those who are involved or have the potential to be involved with the design, implementation, and management of mental health and psychological support programs in preparation for and response to disasters and emergencies at the community, provincial, and national level.

- Mental health professionals
- National disaster focal point
- Community health and support workers
- Relief and response workers
- Government support agencies
- Technical support agencies

Language

All teaching and course materials are in English. Therefore, it is essential that participants are fully conversant in English.

Resource Persons

Internationally experienced practitioners and experts from different organizations will complement ADPC's in house expertise to conduct and facilitate the DMH course.

This course is being conducted in partnership with the **University of South Dakota's Disaster Mental Health Institute (DMHI)**. DMHI's mission is the promotion, development, and application of both practice and research in disaster mental health.

Dr. Gerard A. Jacobs Ph.D., Professor and Institute Director of DMHI is a resource person to this course.

U.DMHI *DMHI is a partner organization of ADPC in relation to Disaster Mental Health.*
DISASTER MENTAL HEALTH INSTITUTE

Course Fee

Full Course (DMH, 23-27 May 2005)

The course fee is **USD 1,600** per participant, which covers the cost of course materials (books, CD, handouts), all meals including the morning and afternoon tea, and accommodation. To complete the full DMH course, participants will have to attend both Community Based Psychological Support Course (CBPS-1) and Psychological Support Practitioners Workshop (CBPS-1A).

CBPS-1 Course (23-25 May 2005)

The fee to attend this 3-day course is **USD 1,000** per participant, which covers the cost of course materials (books, CD, handouts), all meals including the morning and afternoon tea, and accommodation.

Learners will have access to internet and email for the duration of the course. Computers and printers are provided to assist participants to meet course requirements. All learners will be accommodated at the AIT Conference Center.